



CD	EF (HI J)	XY	/O2 (HP)	TZ[	QE (HI J)	RE2 GP/SK	/O\ ]
HH	HH	HH	HH	HH	HH	HH	HH

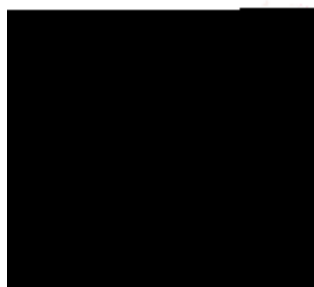
>CD( EF" #CDj G?

2018 ! 37" <=. ) >897) /O5ABW, ^\_`

CD	EF (HI J)	XY	/O2 (HP)	TZ[	QE (HI J)	RE2 GP/SK	/O\ ]
HH	HH	HH	HH	HH	HH	HH	HH

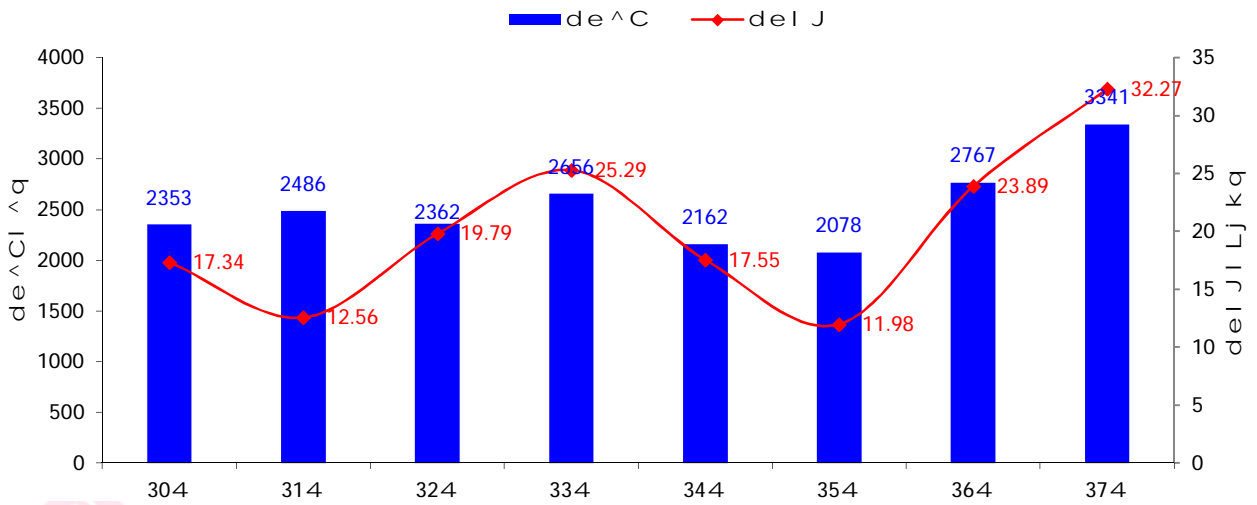
>CD( EF" #CDj G?

20



2018 < = 37 4(9 @ 10 A-9 @ 16 A)78\_` abcBde 3341 ^Gf ghi 20.74%GdeI J K 32.27 Lj kGf ghi 35.07%R

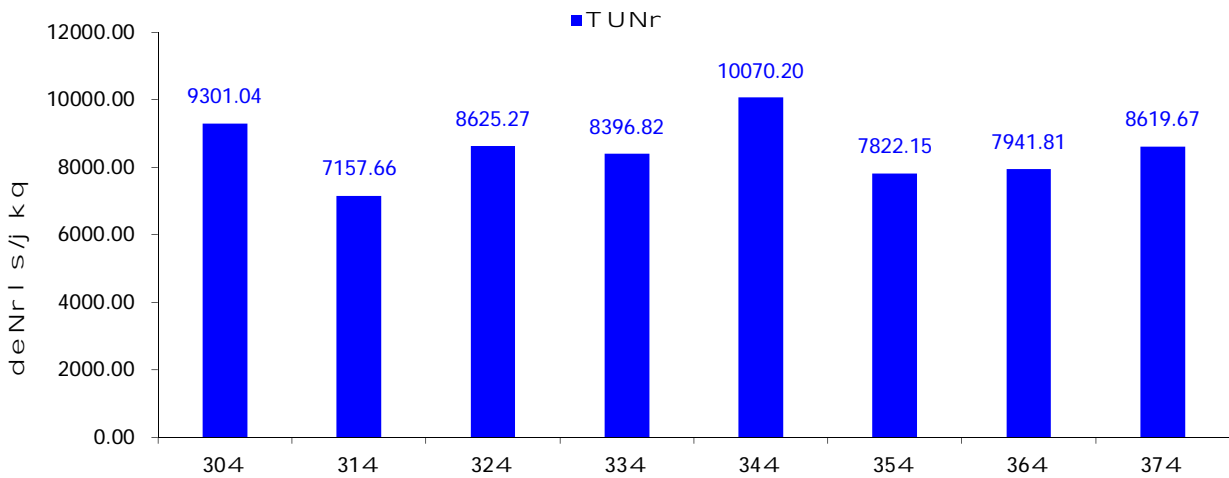
2018 ! 30s 37" < = 85d, - . t u v w



>CD( EF" #CDj G?

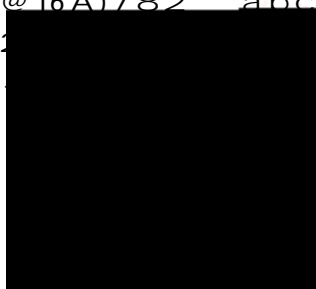
2018 < = 37 4(9 @ 10 A-9 @ 16 A)78\_` abcI OPmanmopqNr K 8619.67 s/j kG f ghi 8.54%R

2018 ! 30s 37" < = 85d, - . / O x 2 v w



>CD( EF" #CDj G?

2018 < = 37 4(9 @ 10 A-9 @ 16 A)782 ` abcde} \* +, p- . / O 1 2 I 578 ^qm, 3 I 439 ^qm45I 312 ^qR1 " # \$ M 6 I 208 ^q{ , 3~ } xn- XY OF%\* & Z 6 I 298 ^q{ 45 VX 6 I 192 ^qR





16	< =	GHI MN	46	0.485067	0.385116	7939.43	105.45
17	; <	/ J K _ MN	35	0.356107	0.382104	10730.02	101.74
18	di	L MMN	46	0.465476	0.363339	7805.76	101.19
19	OF	I 8 > N	11	0.229334	0.356467	15543.57	208.49
20	1 2	7 O > Pa O O'	39	0.404283	0.341133	8437.98	103.66
21	n 8	4 > QRST & BN	2	0.92314	0.323092	3499.93	4615.70
22	o'	OPUVMN	50	0.518135	0.310881	6000.00	103.63
23	4'	W_ 7 N	19	0.216896	0.306423	14127.64	114.16
24	OF	XHU > > Y F 7 Z ?	24	0.311209	0.285139	9162.31	129.67
25	o'	MV X MN	52	0.508127	0.278911	5489.01	97.72
26	; 2						

8

" #Tcd 1993 <GO#efg%hc%i Bj k - l mnoR2007 <G" #pqrs



---

**TUVW**

t 5NOP! EOQRQGSdTU+\$- 23i VUj \$KRWXYQGZ[ [ D\dh] ^\_dl ` - abG cw/dZqi N;  
Pfe- f CDR\_g- hQGfe\$i N; POi CDKj E- ! kR  
t- . Wl 5Nemj nopGpR=qr Qt 5Ns&t - Huvwx Fyz GHRt 5N- /O{ ! " #%&' ( ) \* +, - . 1  
+GWXYQd | } GX~得/O1+f - 同\* RHu/r Qt 5NG视K同\* \$h申SR

---