

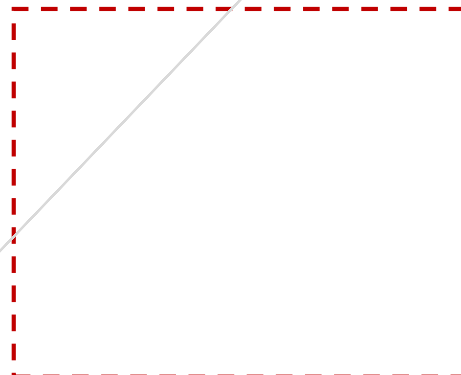
2019

Vertical line



GDP:

:



2018

2019Q3

TOP5

PMI

2019

40

M2

7 9
5400

2
600 /

8

30

9

QE 200 /

5

3
GDP

GDP

6.0%

9

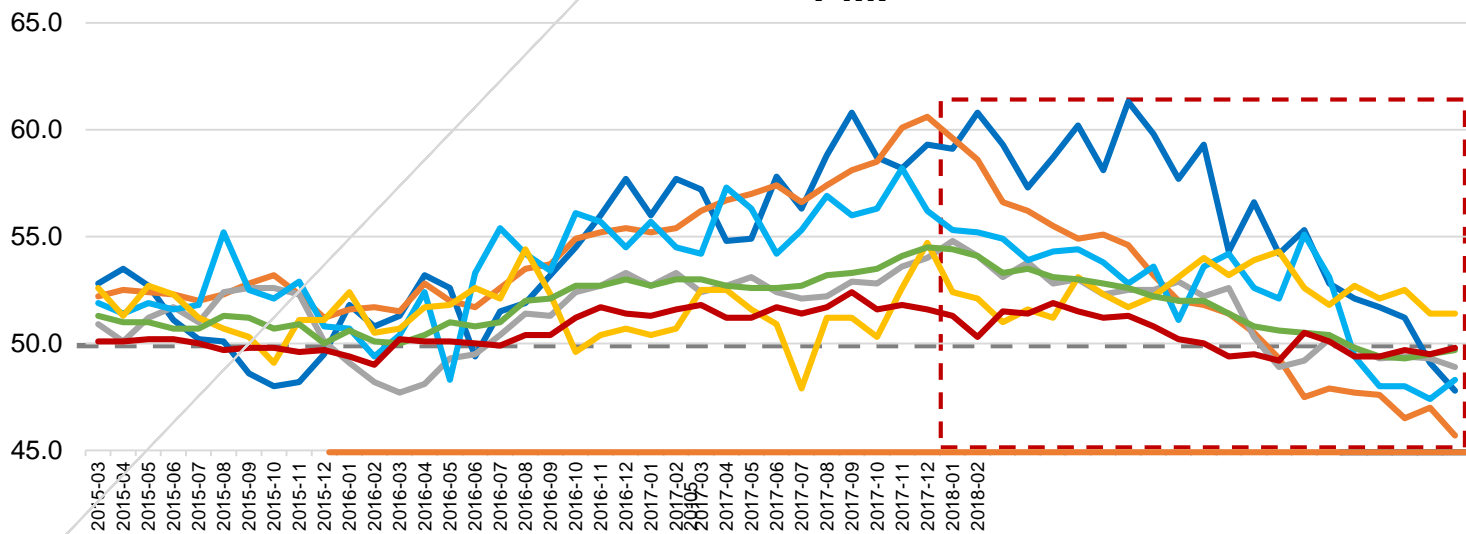
1%

9000

.....

0.5%+

PMI





7 30

" "

2018

- -

" "

5-8

/ /

2019

" "

2019

" "

+

/

44

(2019H1)

(2017.10-2019.08)

7.1%

9

13.06

Q1

4

5-8

9

+

8



(2014Q1-2019Q3)

					7
				3	
2019 1-9	9,380		30%		
	5,487		3,893		
2019 1-9	5,039		43%		
	1,903		5%		3445
		53%			
2019	1,213		-29%		-19% 7
					8
9				7	
2/3					

2019 1-9

29.15

4.68

-1.6%

10.7%;

13.97

0.2%

3.88

4

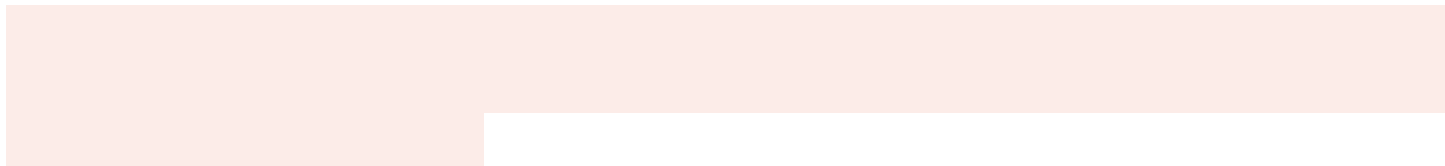
"

"

Vertical line

—

*



2019

44

17

30%

2018

10%

120%

2019

"

"

"

"

"

"

9

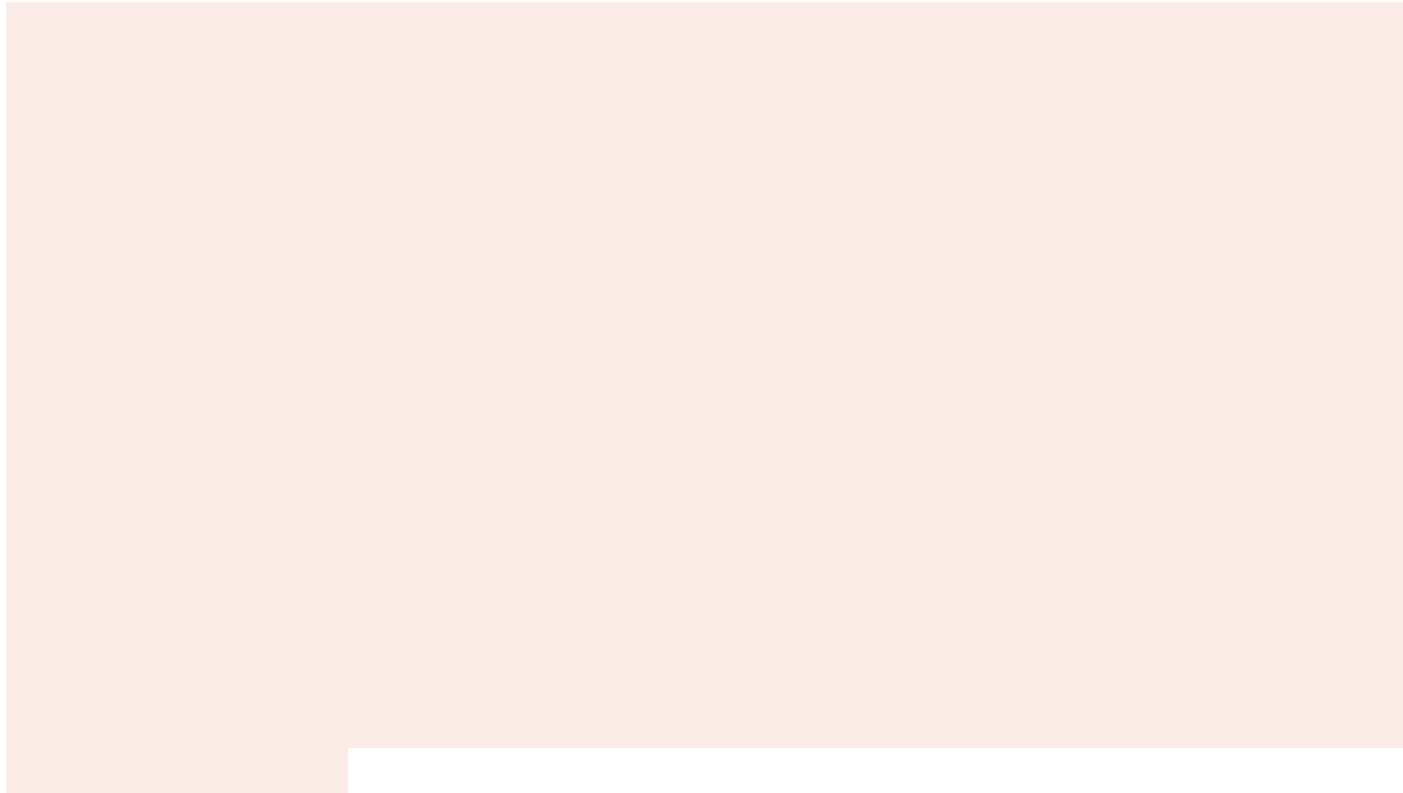
7.2

2.25

4.93

13.5

—



TOP50
28%

20 12

5700

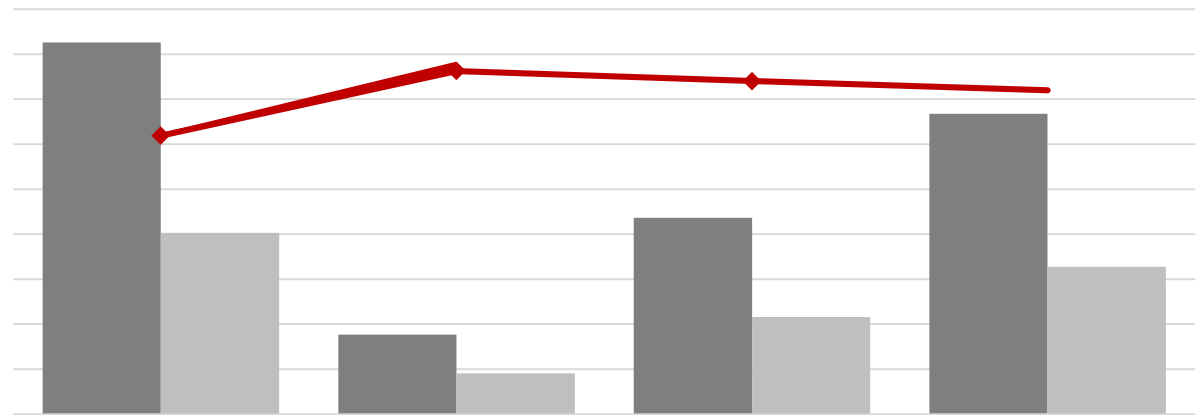
(2014-2019Q3)

5800 / TOP50
4502 / 29%
1200 / 8.1%



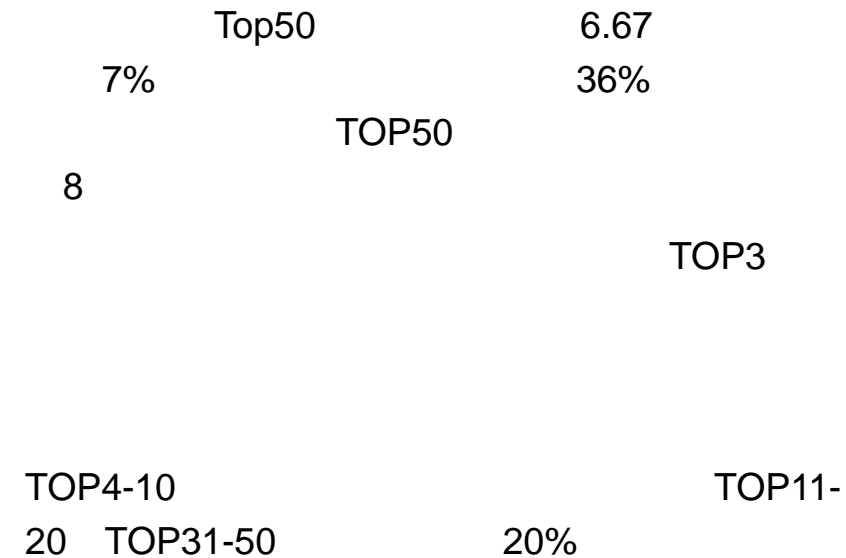
Top50

(,2018-2019Q3)



(,%)

	2018-12	2019-03	2019-06	2019-09
TOP3	21%	-12%	-1%	6%
TOP4-10	31%	19%	20%	14%
TOP11-20	43%	7%	19%	26%
TOP21-30	52%	9%	6%	7%
TOP31-50	54%	22%	25%	21%
	36%	6%	13%	14%



”

LPR

”

”

8

,



"

" ()

TOP100

CPI

7

"

"

"

"

"

"

"

"

10

"

"

,

"

"

,

8 10

12

1

4

1. :

a) :

b) :

()

a) : () () ().

b) : ;

c) :

2.

45 ()

3.

,

45

